

ITE Activities Update

AASHTO Subcommittee on Traffic Engineering June, 2015

Lisa Fontana Tierney, P.E.
Institute of Transportation Engineers

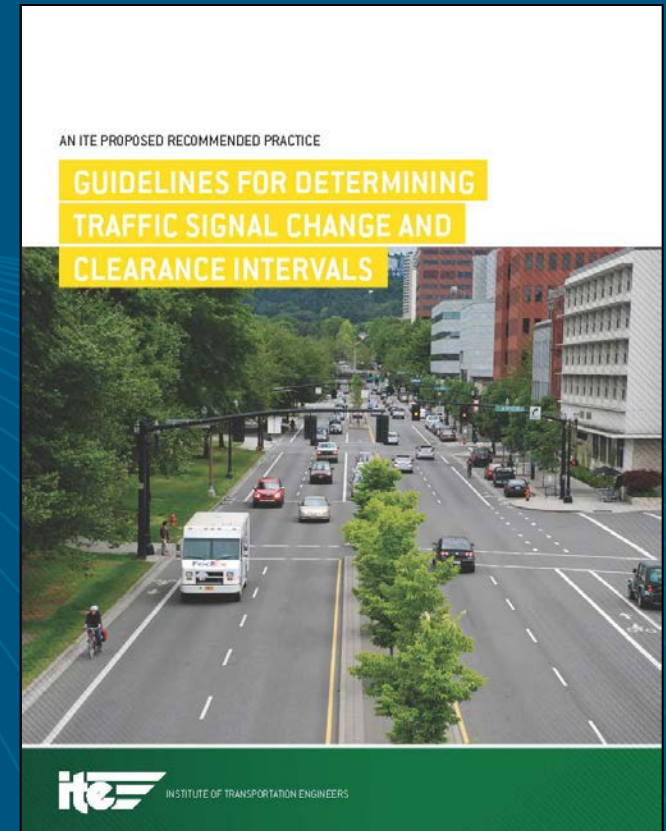
Signals

Guidelines for Determining Traffic Signal Change and Clearance Intervals: PRP (March 2015)

Written suggestions to:

TSCI-RP@ite.org

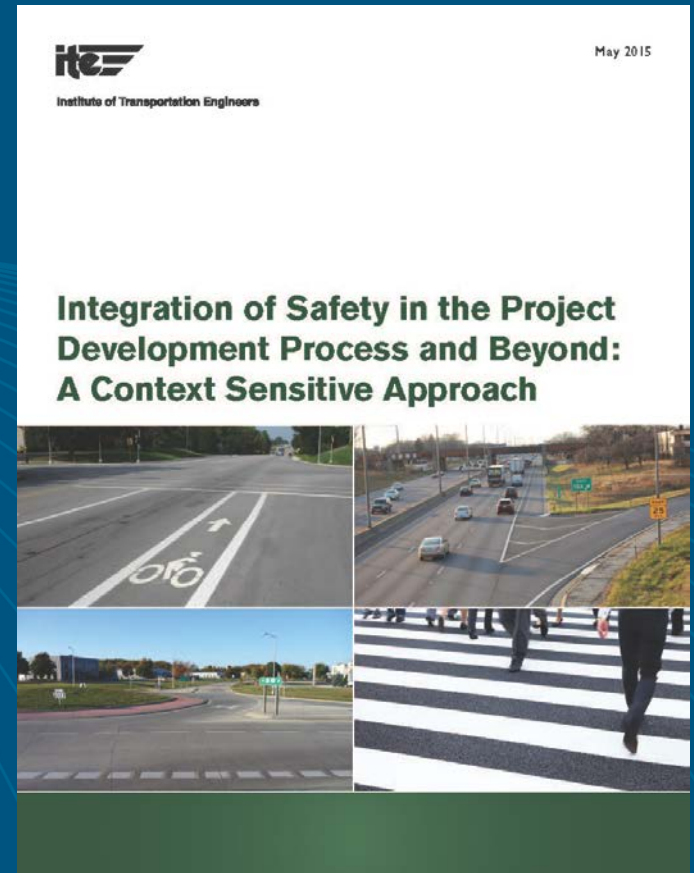
By July 31st, 2015



CSS and Safety

*Integration of Safety in the
Project Development
Process & Beyond:
A Context Sensitive
Approach (May 2015)*

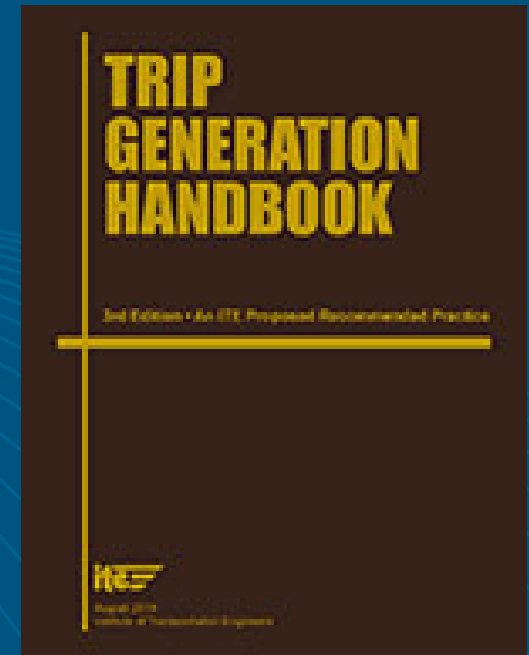
FREE in *ITE BOOKSTORE*



Trip Generation

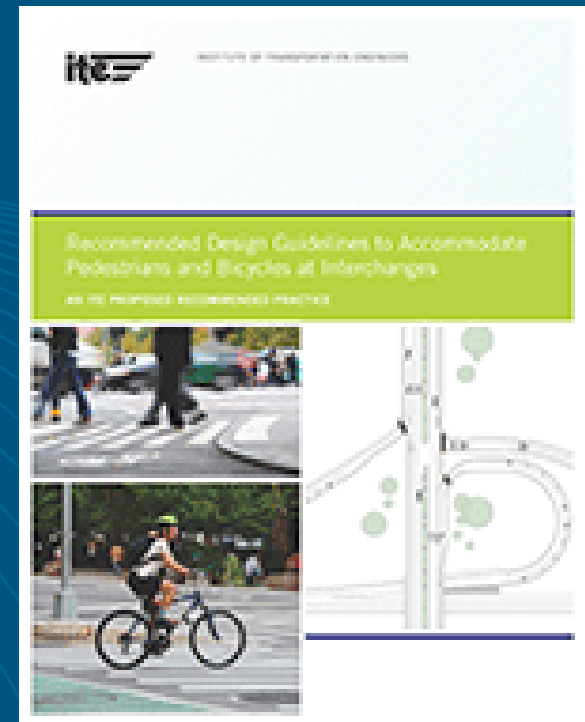
Trip Generation Handbook, 3rd Edition (Proposed RP)

- Person trip generation
- Mixed-use developments
- Transit oriented developments
- Urban infill



Pedestrians and Bicycles

Accommodating Pedestrians and Bicyclists at Interchanges PRP (March 2015)



ITS ePrimer

- *USDOT, ITE, ITSA*
- *On-line resource with 14 modules and PPs*
- *Practitioner tool and text for educators*
- *Webinar series underway soon*

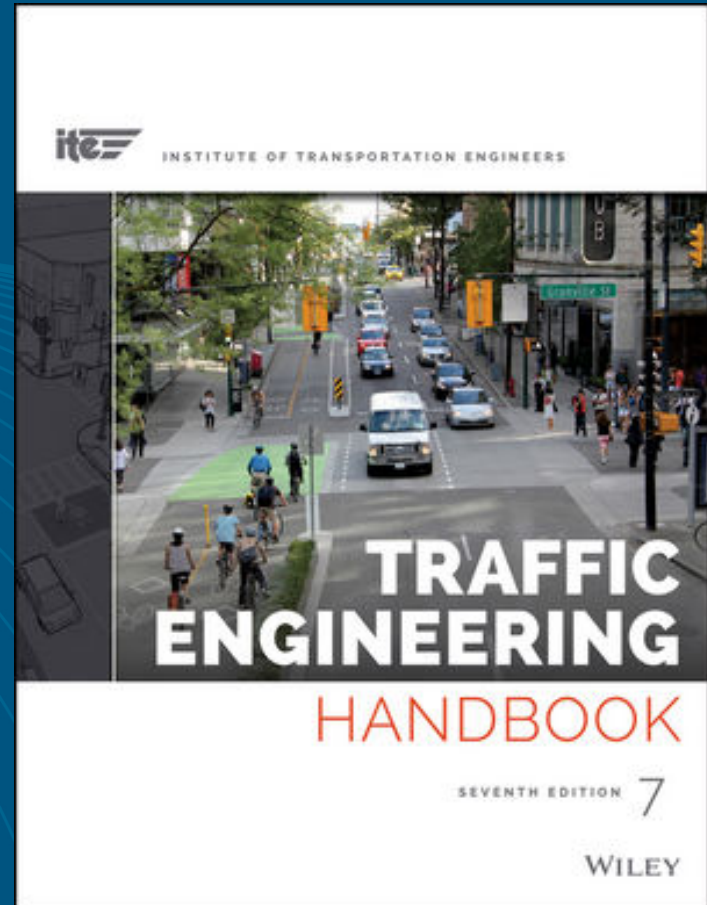
FREE at

<http://www.pcb.its.dot.gov/ePrimer.aspx>



ITE Publications – Coming Soon

Available in
December 2015



-
- Identifies, engages and develops 21st century leaders
 - 2014 Inaugural class was a success
 - Class of 2015 activities underway

www.ite.org/leadership

Join ITE in Florida – August 2-5

Addressing Shifting Priorities



**ITE 2015
International
Annual Meeting
& Exhibit**

August 2-5, 2015 • Diplomat Resort & Spa • Hollywood, FL

The banner features a background image of modern high-rise buildings along a coastline. On the right side, there is a gold-colored seal with a sunburst design. The seal contains the text: "Hollywood" at the top, "Institute of Transportation Engineers" in small text, "2015 International Annual Meeting & Exhibit" in the center, and "FLORIDA" at the bottom.

Jeffrey F. Paniati, P.E. Named ITE Executive Director and CEO





Institute of Transportation Engineers

A Community of Transportation Professionals

Contact for more info:

202-785-0060 (116)

lfontana@ite.org

www.ite.org