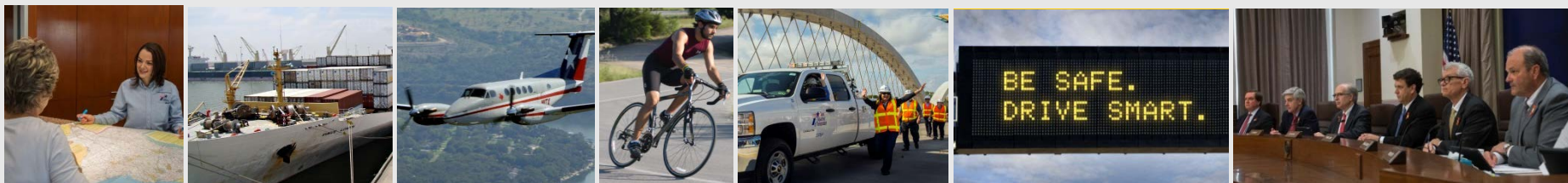




# TEXAS DEPARTMENT OF TRANSPORTATION



## DISCUSSION ITEMS

---

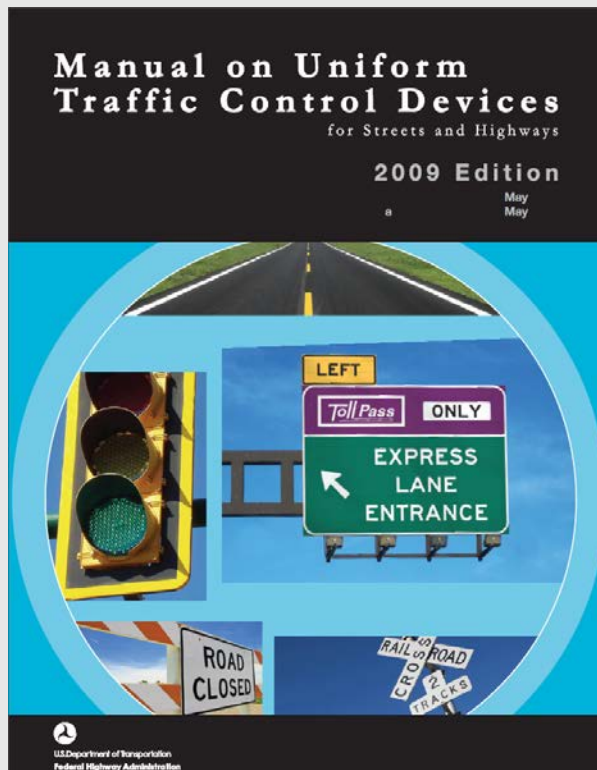
Meg Moore

Traffic Operations Division



Date

Would you like the future MUTCD to have **Standard** and *Guidance* statements only?



## Section 2D.12 Design of Route Sign Auxiliaries

### Standard:

- 01 Route sign auxiliaries carrying word legends, except the JCT sign, shall have a standard size of 24 x 12 inches. Those carrying arrow symbols, or the JCT sign, shall have a standard size of 21 x 15 inches. All route sign auxiliaries shall match the color combination of the route sign that they supplement.

### Guidance:

- 02 With route signs of larger heights, auxiliary signs should be suitably enlarged, but not such that they exceed the width of the route sign.
- 03 The background, legend, and border of a route sign auxiliary should have the same colors as those of the route sign with which the auxiliary is mounted in a route sign assembly (see Section 2D.29). For a route sign design that uses multiple background colors, such as the Interstate route sign, the background color of the corresponding auxiliary should be that of the background area on which the route number is placed on the route sign.

### Option:

- 04 A route sign and any auxiliary signs used with it may be combined on a single sign as a guide sign.

### Guidance:

- 05 If a route sign and its auxiliary signs are combined to form a single guide sign, the background color of the sign should be green and the design should comply with the basic principles for the design of guide signs.

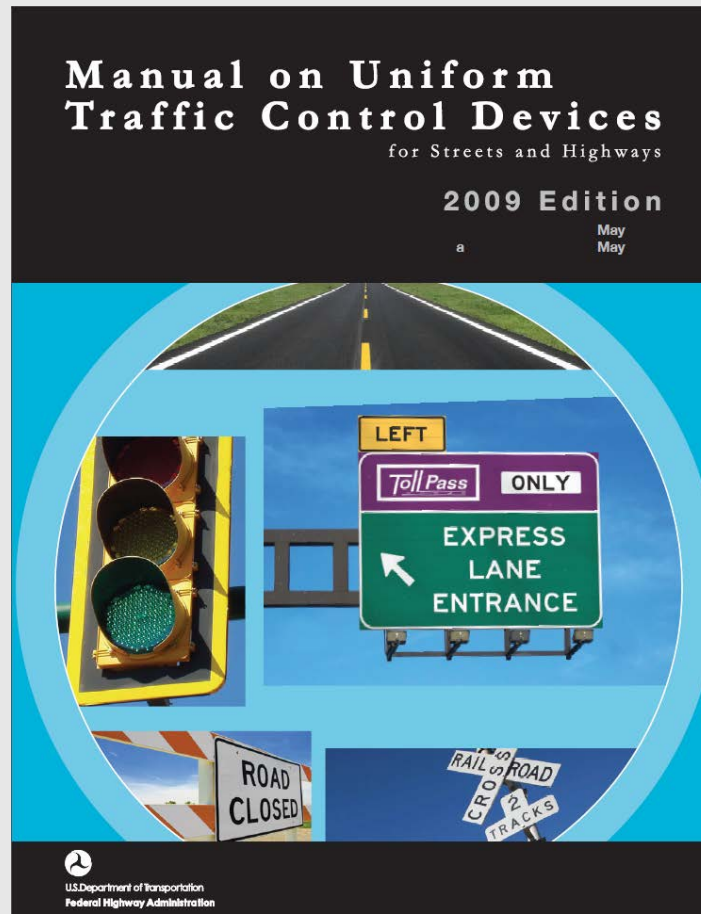
### Standard:

- 06 If a route sign and its auxiliary signs are combined on a single sign with a green background, the auxiliary messages shall be white legends placed directly on the green background. Auxiliary signs shall not be mounted directly to a guide sign or other type of sign.

### Support:

- 07 Chapter 2F contains information regarding auxiliary signs for toll highways.

Would you prefer the MUTCD to be available online only?



The size of the MUTCD keeps growing exponentially.

**Table 2. Summary of MUTCD Evolution**

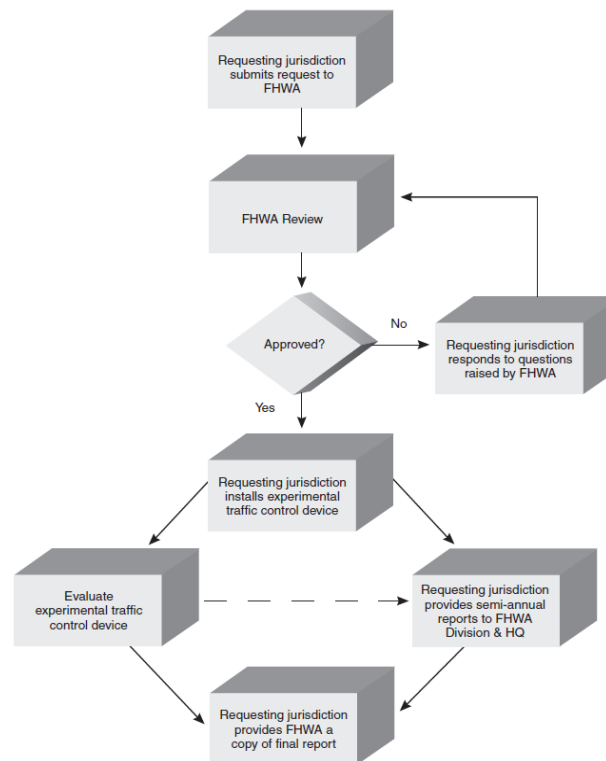
<b>Edition</b>	<b>MUTCD Era</b>	<b>Pages</b>	<b>Parts</b>	<b>Size (inches)</b>	<b>Thickness (inches)</b>
1935	Initial	166	4	6×9	$\frac{3}{8}$
1942		208	4	6×9	$\frac{3}{8}$
1948	Transition	223	4	6×9	$\frac{3}{8}$
1961		333	6	6×9	$\frac{5}{8}$
1971*	Mature	377	8	6×9	$\frac{3}{4}$
1978		425	9	6×9	$1\frac{3}{8}$
1988		473	9	6×9	$1\frac{3}{8}$
2000	Modern	982	10	$8\frac{1}{2}\times 11$	$1\frac{5}{8}$
2003		754	10	$8\frac{1}{2}\times 11$	$1\frac{1}{4}$
2009		864	9	$8\frac{1}{2}\times 11$	$1\frac{5}{8}$

Note: \*FHWA assumed MUTCD ownership

\*\*Source: Gene Hawkins, Texas A&M University

- The current MUTCD does not allow flexibility for new innovation with technology.
- Request to Experiment process is too restrictive.

Figure 1A-1. Process for Requesting and Conducting Experimentations for New Traffic Control Devices





Takes too long for revisions due to rule process.



**66730** Federal Register / Vol. 74, No. 240 / Wednesday, **December 16, 2009** / Rules and Regulations

## DEPARTMENT OF TRANSPORTATION

### Federal Highway Administration

#### 23 CFR Part 655

[FHWA Docket No. FHWA-2007-28977]

RIN 2125-AF22

#### National Standards for Traffic Control Devices; the Manual on Uniform Traffic Control Devices for Streets and Highways; Revision

**AGENCY:** Federal Highway Administration (FHWA), (DOT).

**ACTION:** Final rule.

**SUMMARY:** The Manual on Uniform Traffic Control Devices for Streets and Highways (MUTCD) (also referred to as “the Manual”) is incorporated by

document may also be downloaded from the Office of the Federal Register’s home page at: <http://www.archives.gov> and the Government Printing Office’s Web page at: <http://www.access.gpo.gov/nara>.

#### Background

On January 2, 2008, at 73 FR 268, the FHWA published an NPA proposing revisions to the MUTCD. Those changes were proposed to be designated as the next edition of the MUTCD. Interested persons were invited to submit comments to FHWA Docket No. FHWA-2007-28977. Based on the comments received and its own experience, the FHWA is issuing a final rule and is designating the MUTCD, with these changes incorporated, as the 2009 Edition of the MUTCD.

The text of the 2009 Edition of the

by discussion of significant comments and adopted changes in each of the individual Parts of the MUTCD. All of the items discussed below were proposed in the NPA unless otherwise indicated.

#### *Discussion of General Amendments to the MUTCD*

1. The FHWA received several general comments from State DOTs, local agencies, associations, and citizens regarding the NPA. Two local agencies, a traffic control device vendor, an association, and two citizens expressed general support for the changes in the MUTCD, such as incorporating into the MUTCD recommendations of the Older Driver Handbook, the Synthesis of Non-MUTCD Traffic Signs, and new technologies. In addition to the overall

# Exit Gores

How is your agency dealing with the maintenance or installation of gore signs?



TxDOT developed standard sheet based on ADT (greater or less than 10,000) for the maintenance and installation of gore signs.

